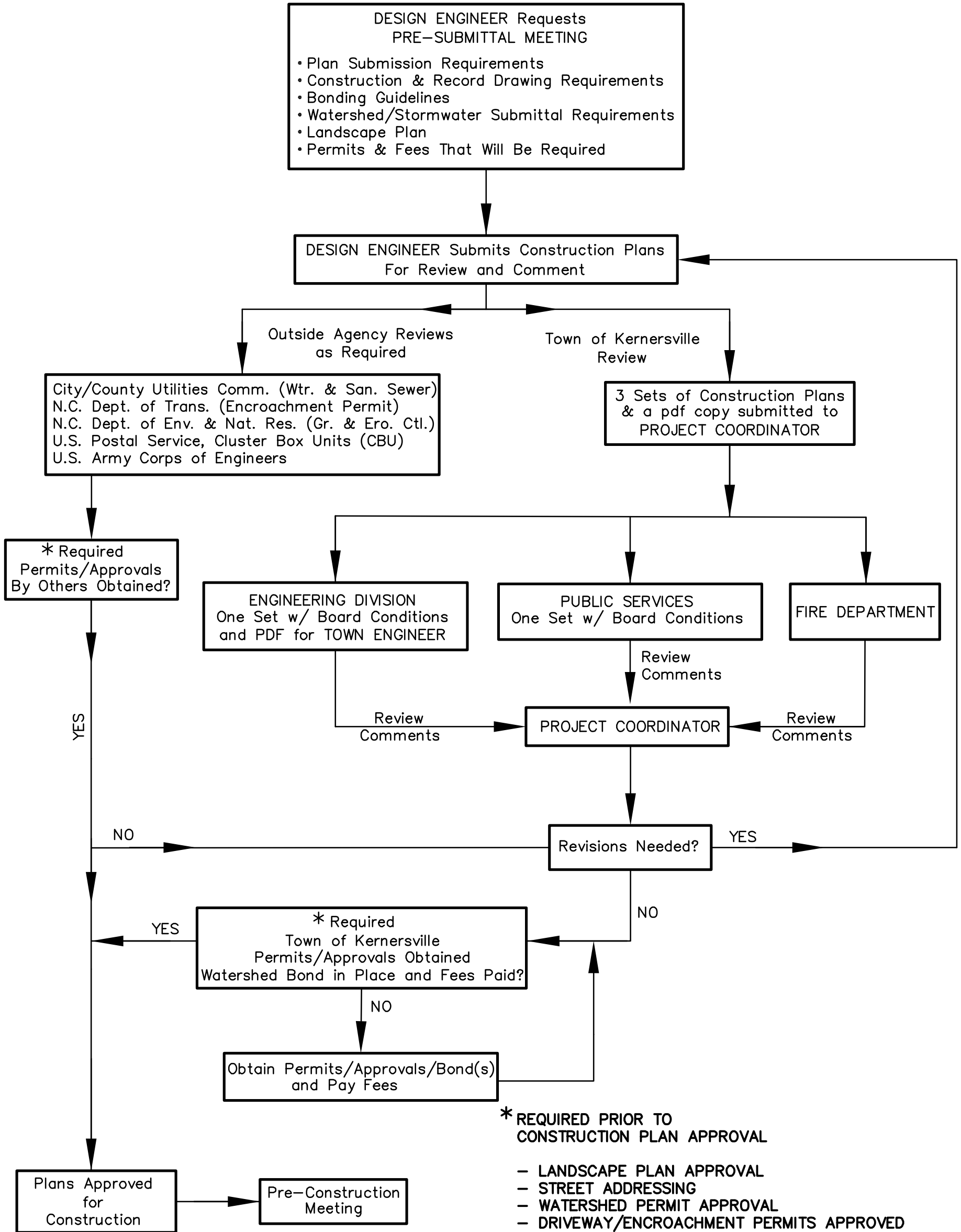


SUBDIVISION CONSTRUCTION PLAN APPROVAL PROCESS



*** REQUIRED PRIOR TO CONSTRUCTION PLAN APPROVAL**

- LANDSCAPE PLAN APPROVAL
- STREET ADDRESSING
- WATERSHED PERMIT APPROVAL
- DRIVEWAY/ENCROACHMENT PERMITS APPROVED (NCDOT and/or Town of Kernersville)
- SURETIES IN PLACE (Watershed and/or Infrastructure)
- CITY/COUNTY UTILITIES COMMISSION APPROVAL (Water and Sanitary Sewer)
- NCDENR LAND QUALITY SECTION (Grading and Erosion Control Plan Approval)
- U.S. POSTAL SERVICE APPROVAL (Location of Cluster Mailbox)
- NCDEQ WINSTON-SALEM REGIONAL OFFICE Division of Energy, Mineral and Land Resources (Grading and Erosion Control Plan Approval) Division of Water Resources (Activities on Streams and Wetlands)
- ARMY CORPS OF ENGINEERS (USACE) (Stream Crossings and Wetlands)
- PAYMENT OF APPLICABLE FEES
Which may include, but are not limited to, Environmental Compliance, Infrastructure Inspection, Site Plan Review, Driveway Permit, Stop/Street Signs, Watershed Permit Review